



# MOUNTBATTEN PARK

NORTH BADDESLEY

## HOME 65

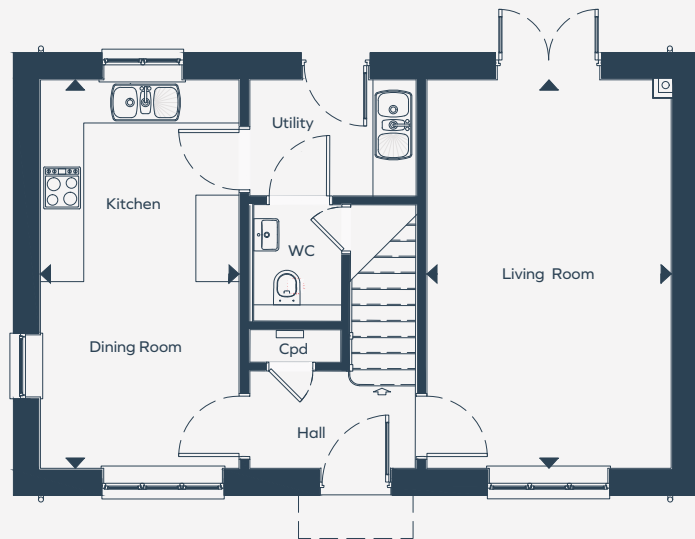
96.4 sq m | 1038 sq ft

A three bedroom, detached home with garage and driveway parking for two vehicles.

### FEATURES INCLUDE:

- South facing rear garden
- Bright downstairs living spaces with doors onto the rear garden and fully fitted kitchen
- Utility room with external access
- Master bedroom with an en-suite bathroom
- Unique brick and stone exterior





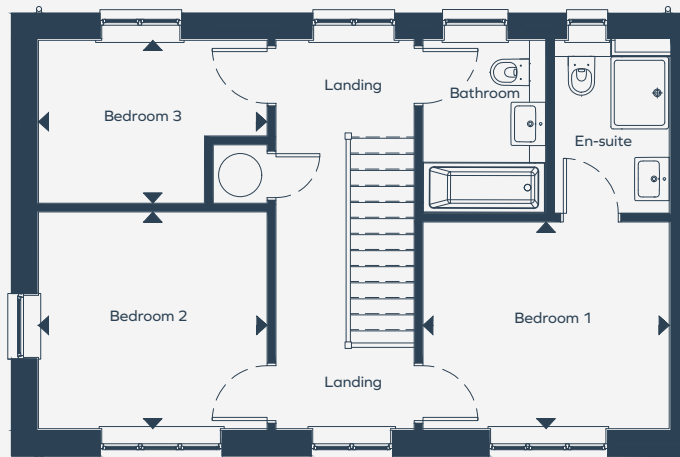
## GROUND FLOOR

### Kitchen / Dining Room

5.39m x 2.75m 17' 8" x 9' 0"

### Living Room

5.39m x 3.38m 17' 6" x 11' 0"



## FIRST FLOOR

### Bedroom 1

3.41m x 2.86m 11' 1" x 9' 3"

### Bedroom 2

3.17m x 3.00m 10' 4" x 9' 8"

### Bedroom 3

3.17m x 2.26m 10' 4" x 7' 4"

The items within this specification are for guidance only and may be substituted at any time. Floorplans shown are for approximate measurements only. Exact layout and sizes may vary. Kitchen layouts to be confirmed. Bathroom layouts are indicative and subject to change. All measurements may vary. The information in this document is indicative and is intended to act as a guide only as to the finished product. Accordingly, due to our policy of continuous improvement, the finished product may vary from the information provided. These particulars should not be relied upon as accurately describing any of the specific matters described by any order under the Property Misdescriptions Act 1991. This information does not constitute a contract, or warranty. The dimensions given on plans are subject to minor variations and are not intended to be used for carpet sizes, appliance sizes or items of furniture. Applicants are advised to contact our sales team/selling agent to ascertain the availability of any property. Computer generated illustrations indicative only. Please check with a member of the sales team for the latest information. Correct at time of going to print.